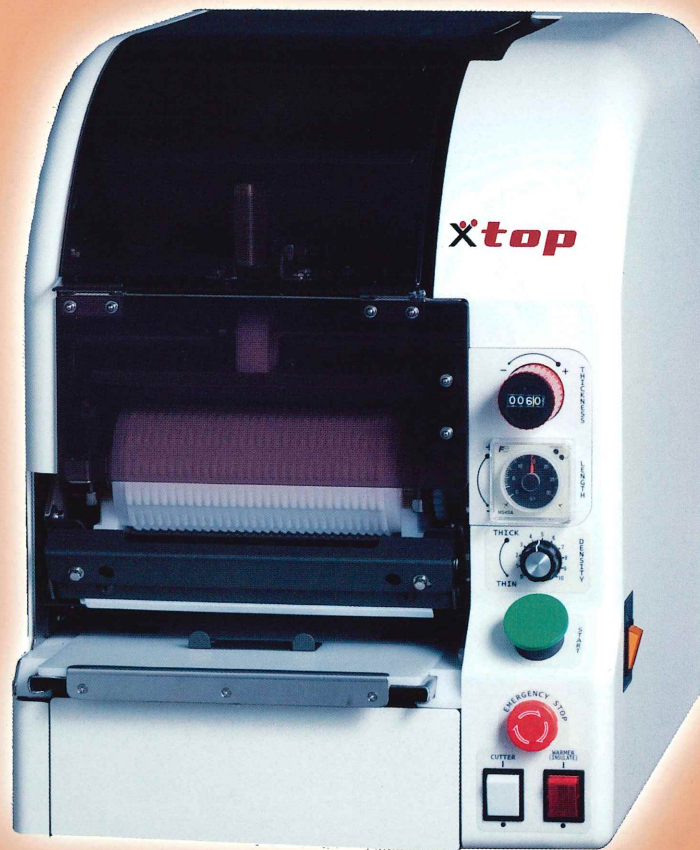


Rice Sheet Robot / TSM-900RS
(Sushi Roll Robot)

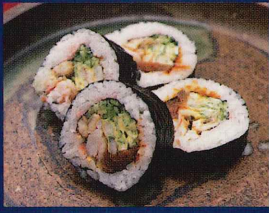
ROLLING MATE



Simplest use everywhere in the world.



Save time and labor cost from making rice sheet !



ROLLING MATE

Simple style.

We achieved a hygienic design pattern with few irregularities.

Main body storage type hopper.

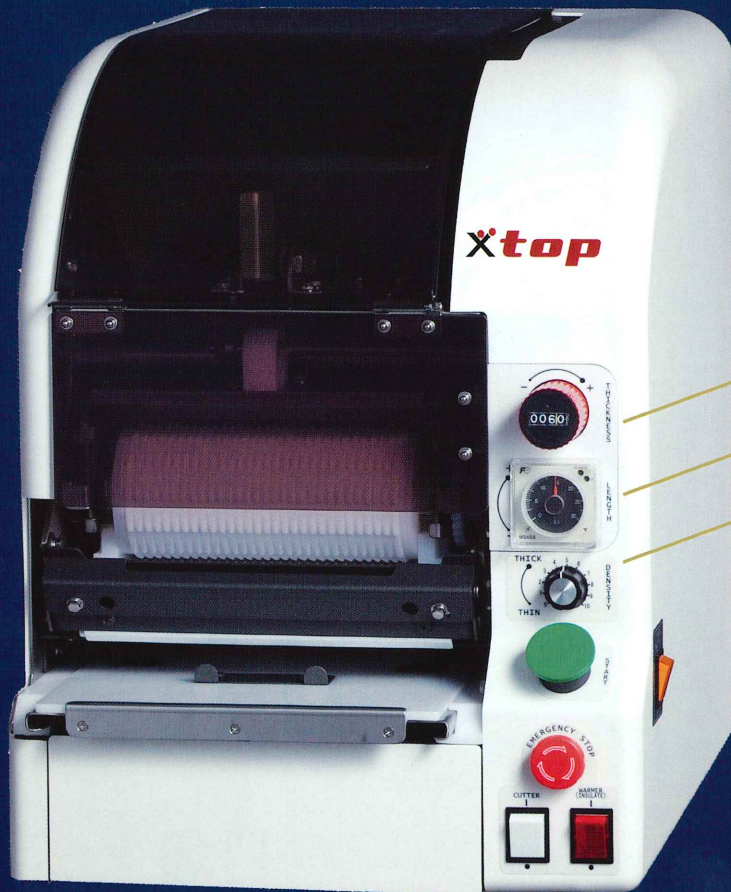
The hopper, protects the rice against external cool air and dryness.

High-performance motor.

A high-quality motor is adapted. You can use it without worry.

Sliding type cutter.

This sliding method can firmly cut the Rice Sheets. It is made of Tefron resin, you can use it without worry.



Alert Function of the Rice Quantity.

It was in "peep" against the lower of the Rice level in the Hopper.

【Easy Control panel】

Rice thickness adjustment.

Rice length adjustment.

Rice Density adjustment.

These dials enable you to easily adjust the thickness length and density of the rice sheet.

Clean table.

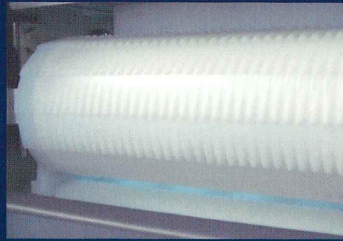
This is made of a material that does not allow the rice to stick to it, you can always carry out operations under the most hygienic condition.

“Simple is Best !”

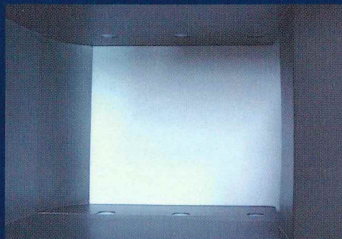
This is the most suitable Robot for making Sushi Roll at a great variety of eating places overseas sushi markets, Such as Sushi-corners at Supermarkets, Hotels, Revolving Sushi bars, Take-out Sushi shops, Delivery Sushi shops, Catering Services, Centralized kitchens, etc.

Power of Rice! **Xtop** TOP,INC.JAPAN

Our long accumulated technologies and expertise, In the domestic market, have been integrated with overseas needs and have resulted in the “Overseas Specification” model, complete with tastiness, functionality and ease use.



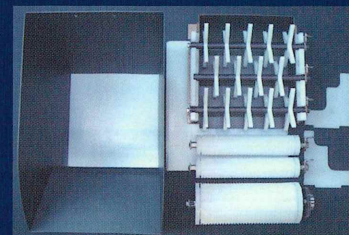
Good textured finish.
Special grooves on the roller (PAT.) extend the rice softy and achieve good textured rice sheets.



Keep-warm function.
The keep-warm function is provided at the bottom portion of the hopper to keep and atabilize the rice at a suitable temperature.



High production capacity.
It makes a rice sheet for Roll sushi in an efficient manner at the speed of one sheet every 6 seconds.



Easy cleaning.
It is easy to remove various parts and moreover such parts are made of a material that does not easily allow the rice to stick, it is also easy to wash and clean them in a hygienic manner.



Storage System.
When you replenish the rice, it is convenient and hygienic as you can store the lid inside the rear side of the main body.

The use may be freely adjusted depending on your operation.



It is possible to directly unload the rice sheet on the table.



It is possible to unload the rice sheet on to preset dried seaweed.



It is possible to unload the rice sheet on to preset rolling bamboo mat.

It is possible to adjust the rice sheet width to meet your rolling method.



The width of the rice sheet : Normal size 18cm(7") / Wide side 20cm(7.8").
For normal type : 18cm (7")
For wide type : 20cm (7.8")
For normal and wide multi-use the machine : It can be changed 18cm(7") and 20cm(7.8").

* You can choose the rice sheet width from the above to meet your requirements when you order your machine

ROLLING MATE

Specifications

Product name	ROLLING MATE
Model/Type	Rice Sheet Robot
	TSM-900RS : Normal type(180mm/7" rice width) / TSM-900RSY:Wide type(200mm/7.8" rice width)
	TSM-900RSK : Normal and Wide Multi type(180mm/7" & 200mm/7.8" rice width)
Production Capacity	Maximum 600 sheets/hour *Depending on the length of each formed rice sheet.
Main body dimension	38W × 52D × 52H(cm) / 15"W × 21"D × 21"H
Main body weight	39kg / 86lbs.
Power supply	100V to 240V
Power consumption	Maximum 120W
Rice hopper Capacity	9kg / 20lbs.

*Specifications and designs are subject to change without notice.

*As our Sushi Robot meet various overseas standards, contact us for further details.

Related products that support making SUSHI



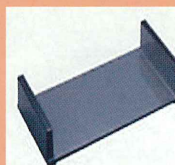
■ **Sushi Roll Cutter. Model:TK-2**
Processing capacity: Maximum 700 pieces/hour
It is possible to cut any rolled sushi
(including reverse rolls) at an equal length.
Dimension: 36W × 41D × 58H(cm)/14"W × 16"D × 23"H
Weight: 18kg/40lbs.



■ **Independent Roll Unit**
This Roll Unit simply produces Roll Sushi.



■ **Sushi Ball Robot. Model:TSM-07**
Automatic feed, automatic forming and Automatic stops.
Production capacity: 2800 pieces/hour
Dimension: 30W × 48D × 59H(cm)/12"W × 19"D × 23"H
Weight: 23kg/51lbs.



■ **Roll Sushi Tray**
You can put roll sushi's and stack another tray on top of the other trays.

■ **Sushi Ball Robot. Model:TSM-09**
Manual feed, automatic forming.
Production capacity: 2000 pieces/hour
Dimension: 30W × 48D × 45H(cm)/12"W × 19"D × 18"H
Weight: 18kg/40lbs.